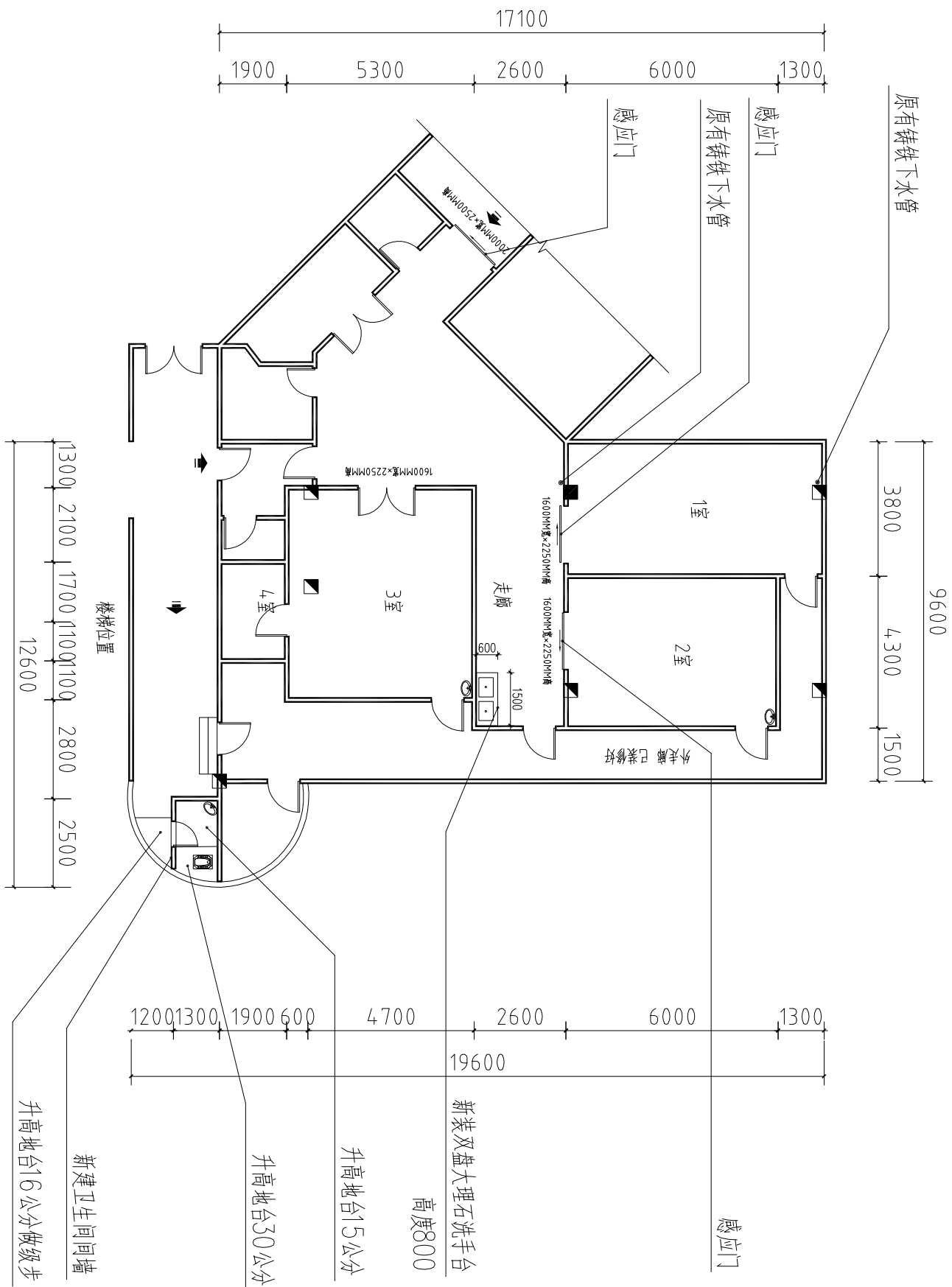


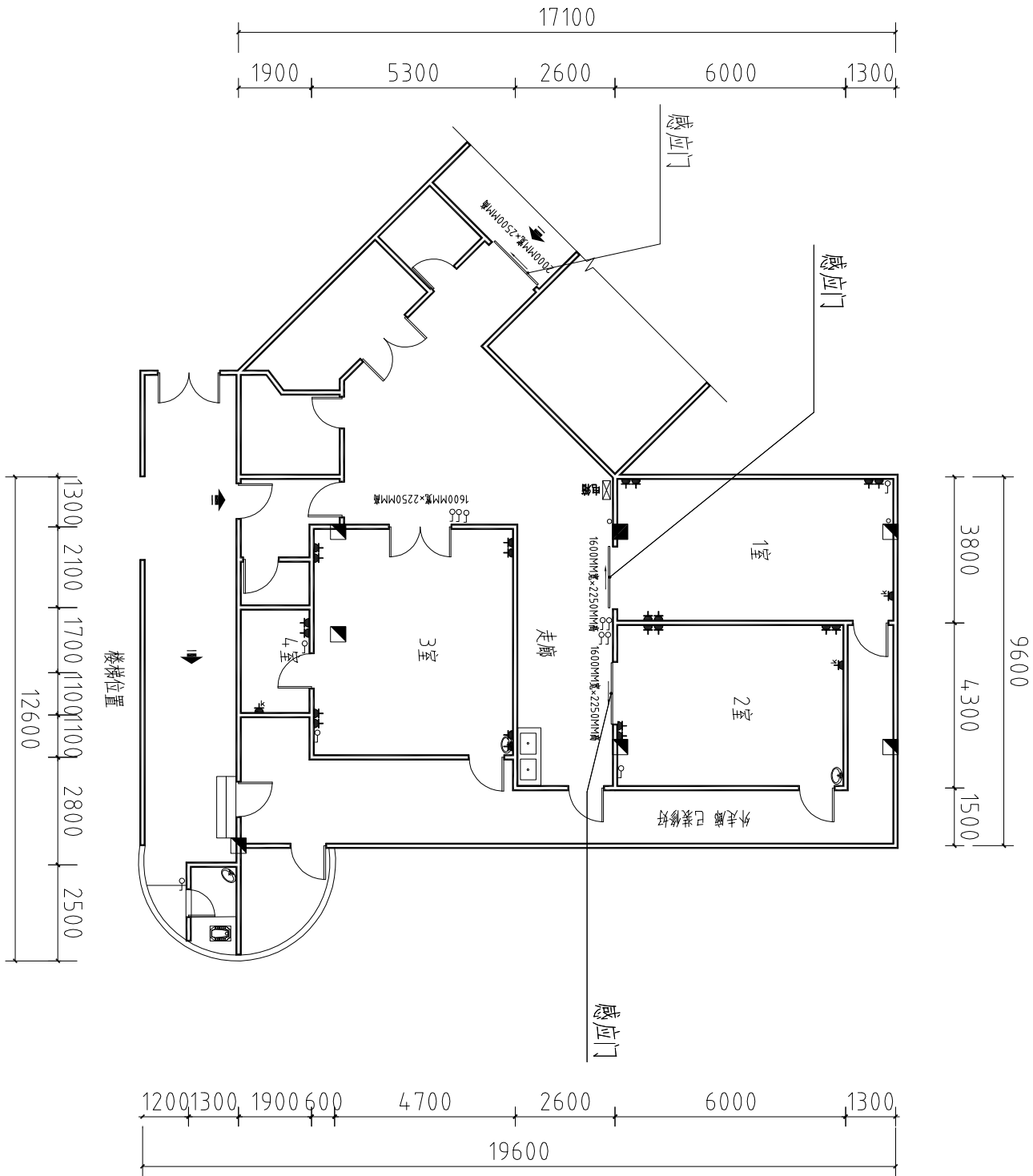
妇科门诊二期装修原图 层高: 3400MM



妇科门诊二期装修图

层高: 3400MM

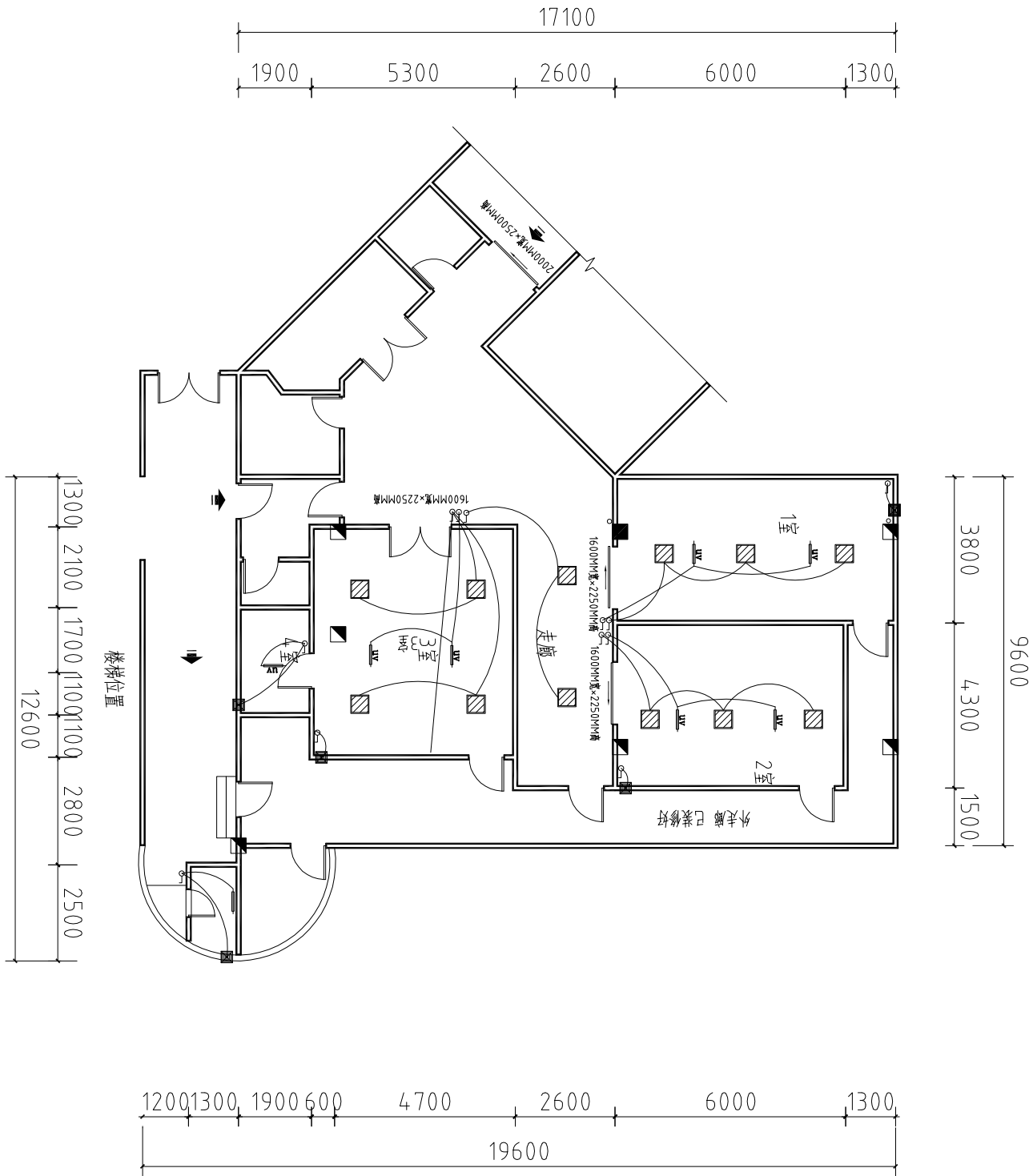
- 开关
- 插座
- 空调插座
- 电箱



妇科门诊二期装修插座开关布置图

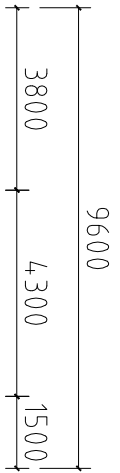
层高: 3400MM

- 开关
- 灯盘
- 排气扇
- 日光灯
- 紫外线灯

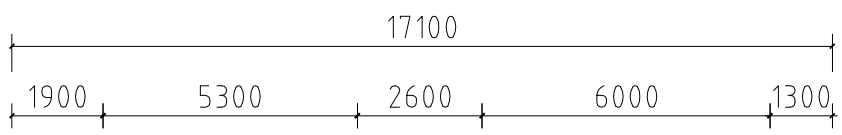


妇科门诊二期装修照明线路图

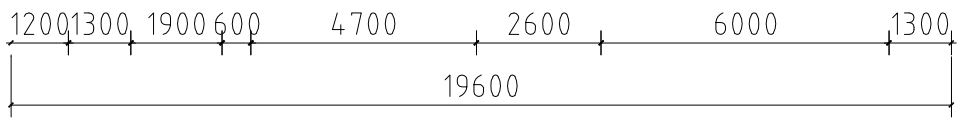
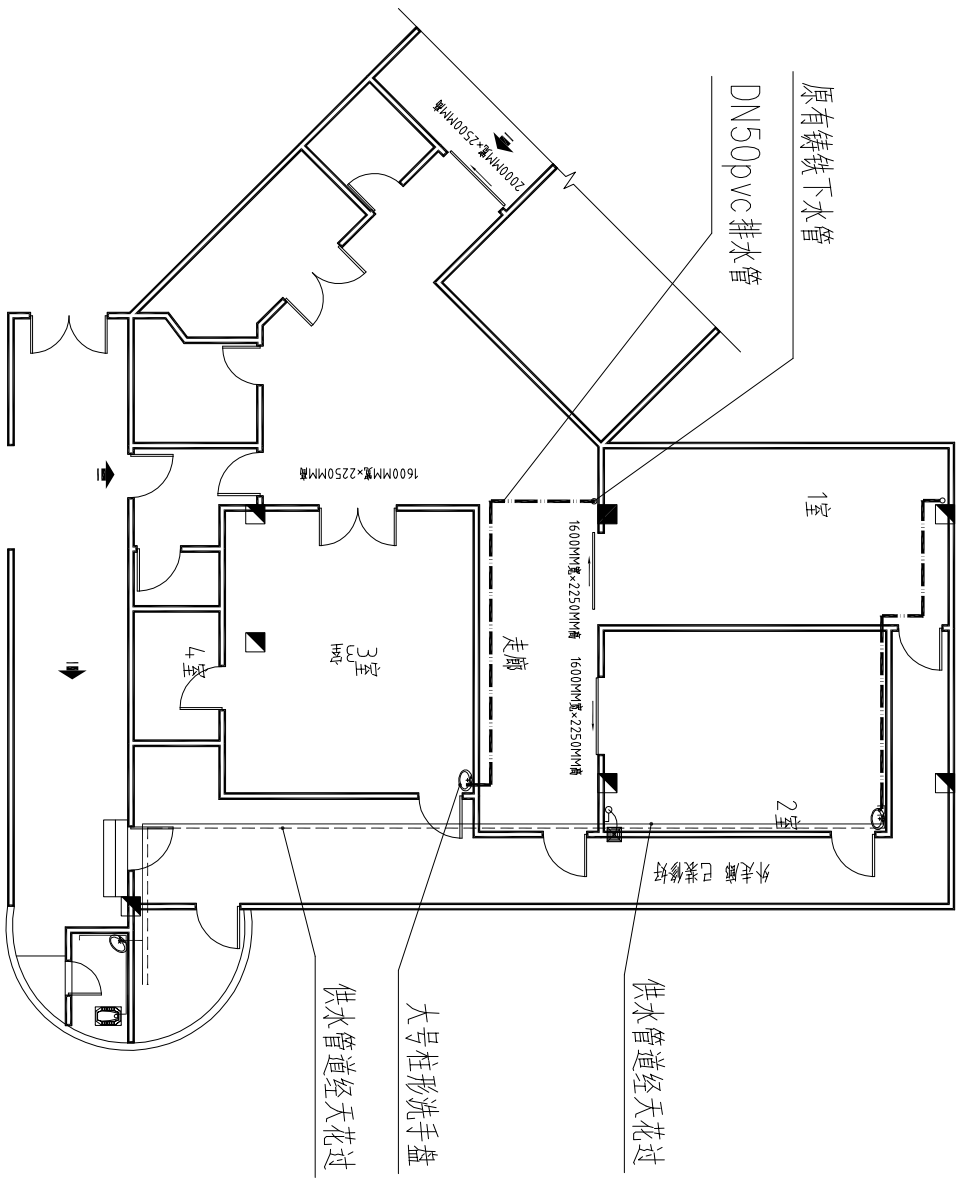
层高: 3400MM



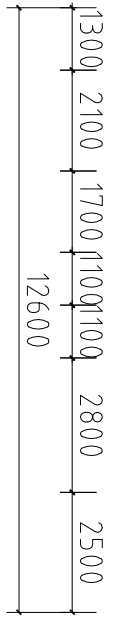
9600



17100



19600



楼梯位置

12600

- 冷水管
- - - 热水管
- . - . - DN50pvc排水管

妇科门诊二期装修给排水示意图

层高: 3400MM